



## **Templemoor Infant and Nursery School**



**Reception Parent  
Handbook  
2022 to 2023**

# Contents

Welcome from the Headteacher	Page 3
The Transition Process and Starting School 2022	Page 4
Our School Values	Page 6
Towards Independence	Page 7
Top Tips!	Page 9
Meet the Reception Team	Page 11
School Uniform and Equipment	Page 12
Settling In	Page 14
Lunchtimes, Fruit and Milk	Page 15
Learning in the Early Years Foundation Stage (EYFS)	Page 17
Our Class Library	Page 19
Assessment/ Reporting to Parents	Page 20
Parent Partnerships	Page 21
Some Really Useful Things to Do	Page 22
Safeguarding	Page 23
Pupil Premium	Page 25
The Friends of Templemoor	Page 27
In and Around the School Grounds	Page 28
The School Office	Page 29
Collecting Pupil Information	Page 30
Equality	Page 31
And Finally...	Page 32
Contact Information	Page 33
School Calendar 2022 to 2023	Page 34

# Welcome from the Headteacher

Dear Parents and Carers

## **A very warm welcome to Templemoor Infant School**

We are delighted that you and your child are joining Templemoor Infant School this coming September. On behalf of all the staff, Governors, children and parents, it gives me great pleasure to welcome you and your family to our school.

At Templemoor we believe that the job of educating is a never-ending one. It begins way before a child comes to school and continues long after they have left. Our aim is to work together in partnership with parents to make the transition to Reception a smooth, pleasant and exciting experience for you and your child.

The early years are so vitally important and we want to share with you in providing experiences and activities that will enrich and stimulate your child's development. At Templemoor we provide a creative and play based curriculum, in a caring, supportive environment in which your child can flourish.

Good communication with parents is one of our major strengths so if you have any questions please do not hesitate to email [admin@templemoor.trafford.sch.uk](mailto:admin@templemoor.trafford.sch.uk) and we will respond as soon as we can.

We hope that you and your child will have a happy and exciting time with us as they continue their journey through a lifetime of learning. We look forward to getting to know you and sharing your child's learning experiences during their time with us. Together we can achieve the very best for your child.

We look forward to welcoming you and your child into school very shortly.

With my very best wishes,



Mr Hodgson

Headteacher



# The Transition Process and Starting School 2022

## The Reception Transition Process for 2022

We aim to make sure that you and your child get all of the information that you need in order to be fully prepared for starting school. The following information is here to support you. We really are here for you every single step of the way.

### What happens next?

You will have received a separate letter outlining important dates in your child's transition diary, including start dates. Please complete the online returnable forms by **Friday 8th July 2022**. These can be found by clicking [here](#). You will have also received some separate paper forms to fill in. Please complete these forms and return them to school either via email to [admin@templemoor.trafford.sch.uk](mailto:admin@templemoor.trafford.sch.uk) or by dropping them off at the school office.

### Welcome Meeting

We would like to invite you to a parents' welcome meeting at school, where you will get the opportunity to meet the Reception Team. You will also get to visit the Reception setting (both indoors and outdoors) and find out a little more about life in Reception. The meeting will take place on **Wednesday 6th July 2022** and will run from 6:30pm to 7:30pm. Please note that this session is for parents only.

### Home Visit

We aim to make the transition from home to school a positive experience, so if your child has **not** attended our school Nursery, we will visit your child in their home setting. This gives you the opportunity to talk with the Reception Team about your little one and they can get to know their new teacher too! These Home Visits are a special way to get to know all of our new children and families, building a strong relationship between yourself and school. It is also an ideal time to share any questions or concerns that you may have.

### Visits to School

Children who have **not** attended our Nursery will be given the opportunity to come in to school before the end of the Summer Term to meet their new class teacher and other children in their class. This means that before they join their new class, the Reception environment is already a familiar place to them. We will also be contacting your child's nursery setting so we can ensure an extra smooth transition. For children who already attend Templemoor Nursery, they will also get the opportunity to visit their new Reception class too.

## **Starting School**

School returns after the Summer Holidays on Monday 5th September 2022. When your child starts school you will find that only a few children will start on the same day. This is to ensure that your child can have the close attention of a member of staff to help them settle in as happily as possible. This may mean that your child may not start school during the first few days of term so please be patient and understand that we have your child's best interests at heart. It does help all children settle readily into the school routine and make transition from home/nursery to school as smooth as possible for everyone.

## **The School Website**

We have created a page on our school website under the tab 'Parents' and 'Starting Reception - September 2022' where all information will be uploaded.

Please remember that our promise to you is that we will continue to work in partnership, to ensure your child's start to school is both as exciting and positive as we can collectively make it.



# Our School Values

## Our School Values

Our core school values are:

**Caring:** We care for and respect each other.

**Achieving:** We love to learn and achieve.

**Making a difference:** We make a difference in our world.

**Together:** We have fun working together.

**Templemoor - 'Caring, Achieving and Making a Difference Together'.**

# Towards Independence

## Helpful Hints for a Successful Start to School

Many parents or carers often worry about how they can prepare their child for starting school. We have put together some helpful hints in order to support your child as they enter this new and exciting phase of their lives.

### Becoming Independent Learners

During the year, your child will develop many skills which will form the foundation of all their future learning. Your child needs your help if they are to gain the independence needed to make the best possible use of all the opportunities on offer in school. We encourage all children to be independent learners as soon as they start in school. It is therefore important that children are given the best opportunities from home to support them with this independence.

### Clothing

Before your child starts school try to teach them to find, put on and fasten their coat and manage gloves and hats. Teach your child to dress and undress themselves in their uniform. Remember to purchase shoes with Velcro on rather than lace up shoes, so that your child can easily remove and replace their own footwear. By teaching your child to do these things independently you will be offering your child (and all the others in the class) the opportunity to make the best use of teacher time. Keep practising over the holidays!

### Toileting

There are toilets inside each classroom area and children are free to use them whenever they need to. To help your child, teach them to use the toilet independently (this is essential). Train your child to flush the toilet then wash their hands with soap for at least 20 seconds after they have been to the toilet (this is essential). Unless your child has a specific medical reason, children need to be able to use the toilet area independently. Please encourage your child to wipe their own bottoms at home as staff will not be able to provide this intimate care for children who do not have specific medical needs.

### Recognising their own name

Some parents worry that their child will need to know their alphabet or be able to write their name before they start school. This is not necessarily the case. We will teach the children how to form the letters of their name correctly as part of our learning in school. One thing that would be really useful for your child to do before they start school is to learn how to recognise their name. This will help them when locating their class drawer, coat, book bag or finding lost items of clothing, etc.



## **Eating**

Having lunch with friends is one of the things that many children look forward to, but lunchtime can be an anxious time for young children. You can help your child enjoy lunchtime by teaching them to sit at a table to eat their food, demonstrating good manners and correctly using a knife and fork independently. Children will be encouraged to 'try' all foods and to eat a reasonable meal.

All of these things will help your child have a positive first experience of school.

## **Saying goodbye to you**

We aim for each child to enter the classroom independently, hang up their own coat and be ready to enjoy the day.

## **Transition Booklet**

We have uploaded a transition booklet onto our website which has been specifically designed to support parents who have a child due to start Reception in September. It identifies the different aspects of Personal, Social and Emotional development within the Early Years Curriculum. Through planned activities, some incorporated within your daily routine, you can support your child to be ready for school. We really do hope that you find this resource very useful.





# Top Tips!

Below you will find some tried and tested top tips to help you prepare for that very special first day at school

## 1. Be organised

Nothing's going to make that first day at school more fretful than trying to find a change of everything in the morning. Pack your child's bag in advance every night before a school day.

## 2. Label everything!

One of the banes of school life is losing possessions - something will inevitably go astray. You can minimise losses by encouraging your child to look after their own belongings, putting things away in bags and hanging items on specific pegs. When it comes to labelling clothing, maybe ask your child to choose a special symbol that is their own unique mark - perhaps a smiley face or a star - to help them recognise their own things at a glance in those fraught early weeks when everyone's items may look identical to your child's!



## 3. See them settle

It's true that the reason most children cry when you drop them off at school is because they are anxious about leaving you, but experience shows us that once you leave, children are normally fine. We want both you and your child to feel comfortable in school and so we will phone you if

your child continues to be distressed and if you're really worried we'll phone to tell you that they are okay too!

#### **4. Plan a distraction**

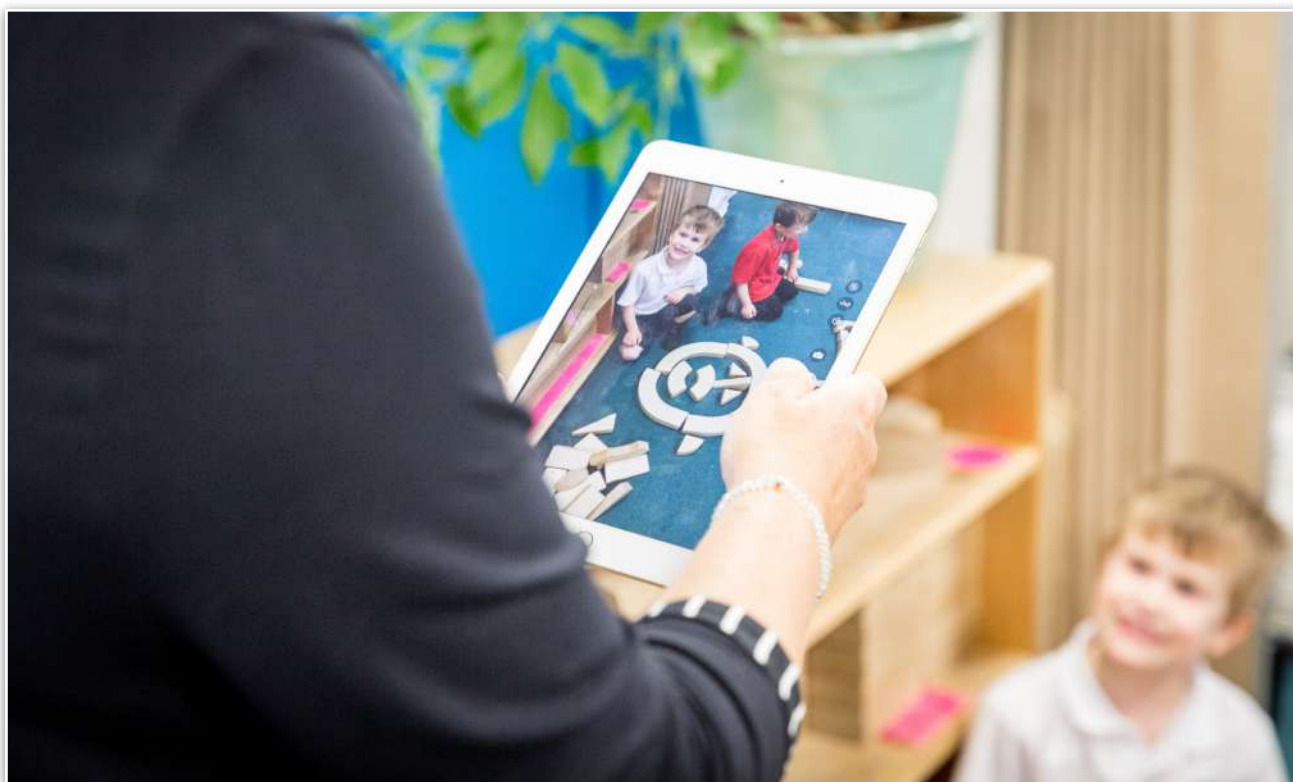
Make sure you have something fun to keep you occupied during those first few days, be it shopping, walks or work. If you can meet up with a parent who's an old hand at this school lark, even better, as they can reassure you if you start to get too anxious.

#### **5. Hide your tears**

As a parent, you have to accept that starting school is a stage in your child's development and they are becoming more independent. If you are finding the experience difficult, try and put on a brave face in front of your child and then go around the corner and weep! And when that glorious first day is done, you can start the age-old tradition of asking, "What did you get up to at school today?"

#### **6. Remember, there's so much to look forward to**

As you're walking down Nursery Close on that very first day, remind yourself that there's a whole cast of new characters to get to know - teachers, teaching assistants, other parents - and a plot that is yet to be written. You may be the producer of this adventure; the teacher may be a director; but it is your child who is about to join the cast of their very own wonderful infant school community!



# Meet the Reception Team

The Reception Team consist of experienced Early Years practitioners.

## Ladybirds Class



This is **Mrs Cundick**. She is our Early Years Lead and is also the class teacher in the Ladybirds Class.

## Bees Class



This is **Mrs Berry**. She is the class teacher in the Bees Class from Monday to Thursday.



This is **Mrs Ree**. She is the class teacher in the Bees Class every Friday.

## Teaching Assistants



This is **Mrs Hardman**



This is **Mrs Frost**



This is **Miss Little**

# School Uniform and Equipment

## What does my child need to wear?

Our school uniform gives your child a sense of belonging and pride in their school and stops any worrying about what they will need to wear each day. We ask parents to provide the correct uniform for their children. Our school uniform consist of the following items:

Please note that items with a \* are available to purchase online through the online uniform shop (please see details below and on the following page).

### Main School Uniform

Long grey trousers or shorts

Grey socks

White or red polo shirt (school\* or plain)

Red sweatshirt (school\* or plain)

Green Cardigan

Red Fleece\* (optional)

Royal Stewart tartan pinafore dress, skirt\* or trousers\*

Green tights or white socks

Sensible black shoes

Sensible coat with hood

Safari cap\* (optional for summer) or sun hat

### PE Uniform

Plain white t-shirt

Plain black jogging bottoms, black shorts or black leggings

Red sweatshirt (school\* or plain)

### Book Bag

These bags will be provided free by our Friends of Templemoor Parent Teacher Association.

## How to order

Please visit [www.templemoor.uniform4you.co.uk](http://www.templemoor.uniform4you.co.uk)

When asked for the password, this is **Nurseryclose1** (case sensitive)



The school uniform is your child's work and play outfit, so it is important that they are not anxious about getting paint/mud on their clothes. Plastic aprons are provided for painting and messy activities but accidents do happen! School has a small number of spare uniform items which will be lent to your child as and when needed. Please wash and return these items to the class teacher.

In Reception we go outdoors in all weathers, so your child will need a warm outdoor coat with a hood and in winter a hat, scarf and gloves. Children will need a sun hat and sun cream in the summer.

## Hair

Long hair should be tied back at all times. Hair accessories should be simple and limited to the school colours.

## Jewellery

Children may wear a watch/ fitbit for school but all other items of jewellery are not permitted. Please note that the school will take no responsibility for items that may go missing. Earrings must **not** be worn in school as they are a risk to health and safety.

## Book Bag

To encourage children to use the class library and to take good care of books children will need a Templemoor Book Bag. These bags will be provided free by our Friends of Templemoor Parent Teacher Association. The bags are for books and papers only (it's a good idea to look in them every evening to check for letters/information or works of art!)

## A Water Bottle

Water bottles can be brought into school and children can refill these over the day should they need to. Juice or squash must **not** be put into these bottles as the sugar and acid content is very detrimental to children's teeth, especially if sipped during the day. It is your child's responsibility to take their water bottles home each day to be refilled.



# Settling In

## Starting School

When your child starts school you will find that only a few children will start on the same day. This is to ensure that your child can have the close attention of a member of staff to help them settle in as happily as possible. As we have already mentioned earlier in this handbook, your child will have a specific start date, in order to allow for transition, so please be patient and understand that we have your child's best interests at heart. It does help all children settle readily into the school routine and make transition from home/nursery to school as smooth as possible for everyone. We hope you appreciate why this is necessary.

The separation between you and your child can sometimes be difficult but our staff have lots of experience in helping both children and parents, so do try not to worry.

## Arrival and Collection

### Arrival

Classroom doors open at **8:55a.m.** School starts promptly at **9a.m.** A member of Reception staff will open the classroom door into the playground and be there to greet children and parents and collect any brief messages you may need to pass on (e.g. my child will be collected by grandparents today). If you need to speak to a member of staff for more than a few moments feel free to make an appointment or to have a chat after school.

### Late Arrival

If you anticipate a late arrival please let the school office know in advance. The classroom doors and main gates are closed at 9a.m. and if you arrive after this time please sign in at the main school office.

### Collection

School finishes at **3.15p.m.** (gates are opened for parents around 10 minutes before). Please wait by the classroom door and Reception staff will send your child to you. Children will only be released to known adults. If there are any changes to collection arrangements, please let us know in writing, face to face or by contacting the school office.

Obviously you will want to be in good time to collect your child from school. If, for any reason, you are going to be late, please notify us and we can reassure your child that everything is fine.



# Lunchtimes, Fruit and Milk

## Mellors Catering Services

All children from Reception to Year 2 are provided with a free school meal. The school works with Mellors Catering Services to provide lunches for the children. Meals are cooked on site in our kitchen by our catering team. Weekly menus are available to view on our school website, and parents can choose meals with their children via a parent app (further details to follow).



Mellors provide freshly produced hot specials of the day, fresh vegetables and salad, a vegetarian choice, hot and cold desserts, snacks and sandwiches. If your child has a food allergy or specific dietary requirements, please ensure that you complete the 'Special Dietary Needs' form. Further information can also be found in the 'Allergens Parent Pack', and in our 'Allergy Management Policy' that is available to view on the school website under 'Parents', 'Starting Reception - September 2022'.



## National School Fruit Scheme

During the morning, each class enjoys a healthy snack. The Government provides a range of fruit and vegetables free to the school for all of our EYFS and KS1 children. We support the

children over a period of weeks to become independent in helping themselves to a piece of fruit or a vegetable each morning. Parents are often amazed at the range of fruit and vegetables that the children will try, which they wouldn't necessarily try at home. Parents are not permitted to provide any alternatives for snack.

## **Milk**

School milk is free for under-5s, and for over 5s it is available at a subsidised price of 22p per day. Parents and carers must register with Cool Milk in order for their child to receive milk. Details of how to register with Cool Milk are available in the Returnable Forms pack.



## **Treats**

Due to some children having food allergies, children are not allowed to bring into school any sweets or cakes for birthday celebrations. If you would like to donate a children's story book instead that would be very much appreciated!

# Learning in the Early Years Foundation Stage (EYFS)



Planning in Reception follows the Early Years Foundation Stage Curriculum. It is also called the EYFS for short. This is the same curriculum followed in the Nursery. It continues the developmental journey of your child.

There are seven areas of learning made up of 3 prime areas and 4 specific areas as follows:-

## **Prime:**

- Personal, Social and Emotional Development
- Physical Development
- Communication and Language

## **Specific:**

- Literacy
- Mathematics
- Understanding the World
- Expressive Arts and Design

The 'Foundation Stage' is well named as it is the foundation on which future learning is built.

In Reception, children are given the opportunities to investigate, satisfy their curiosity, explore their environment both indoors and outdoors, share the world of books, music, drama and the arts, experience success and develop a positive attitude towards learning.

They are encouraged to make choices and are provided with opportunities through play and other experiences to develop skills and independence.

## **Learning through Play**

Young children learn and develop their physical, social, emotional and intellectual skills through playing and talking. They also learn how to socialise as they engage in learning experiences with other children and adults.

Throughout the day, the Reception team will observe your child and assess how they are learning and developing. These assessments are used to gather information about progress which is shared with you through informal discussions when you collect your child, printed reports and parents' evenings.

By the age of five, a child has learnt all the basic skills they need to survive. It's pretty amazing when you think about it and it all takes a lot of practice. Any support you can give your child at home will maximise their opportunities to make good progress throughout their school life.



# Our Class Library

At the heart of learning to read lies a love of books. Children never tire of hearing stories read to them, discussing the content of the story, gazing at the pictures and repeating their favourite parts back to you.

Reading stories to children forms a crucial part in helping them to learn to read. Therefore, we have put together a wide selection of lovely books, which the children may borrow on a daily basis. The children will be able to change books every day at the end of the session. We would be grateful if you could sign the books in and out on your child's library card.

Sometimes your child may choose a book to read alone. We are asking you to help us, and more importantly, your child, by finding a few quiet moments every day to read or tell a story or stories to your child.

**This is probably the single most important way in which you can support your child's education and even children who are fairly independent readers will benefit from being read to.**

Books are expensive – please encourage your child to take care of them and carry them to and from school in their book bag. If you have an accident with a book or find a damaged book, please inform a member of staff.

**We hope that you and your child enjoy the class library together.**



# Assessment/ Reporting to Parents

Assessment is an integral part of the daily routine in Reception. It provides information about the children's learning and development that informs future planning procedures. Observations and assessments on individual or groups of children are focussed and selective. This information is shared with parents through informal discussion, parents' meetings and in the end of year report. Snapshots will also be shared via the online platform, Seesaw. When starting school please download the Seesaw app, and ask the Reception team for a link, so that you can access your child's Seesaw profile.

## **The Reception Baseline Assessment (RBA)**

Your child will be participating in the statutory reception baseline assessment (RBA) within the first six weeks of starting reception. The RBA is a short, activity-based assessment of pupils' early mathematics, literacy, communication and language skills. The RBA is not about judging or labelling your child or putting them under any pressure. Your child cannot 'pass' or 'fail' the assessment. The purpose of the assessment is to provide the starting point for a new measure that will help parents understand how well schools support their pupils to progress between reception and Year 6 / the end of Key Stage 2.

## **Reporting to parents**

It is our aim to work as a team with you and your child to gain the best from their Reception experiences. There are two sets of parent consultation evenings; one in the Autumn Term and one in the Spring Term. At the end of the summer term, you will receive a written report which show the progress your child has made. It will also give you details about their learning behaviour and their next steps in learning as they move through to Year 1. Children contribute to this report by including their own statement on their strengths and achievements in and out of school.

We value the informal daily discussions with you and these interactions help everyone to keep up to date and foster a mutual commitment to the development of your child. If you feel the need to contact the staff on any matter, do not hesitate to do so. We are usually available after your child's session or if not an appointment can be made.

## **Extra Support**

Sometimes we find that children's learning progresses at a slower rate than we would expect. To help the children catch up, all Reception staff are involved in small group activities which give extra support when it is needed. If you ever have any concerns about your child's learning, hearing, speech or mobility please do speak to us and we will do all we can to help.



# Parent Partnerships

We are very proud of our strong parental partnerships. We ensure that parents feel secure in the knowledge that their child is well cared for and happy at school. Our parents are welcome to be actively involved in their child's learning in school and are able to share learning experiences through learning journeys, volunteering and parent workshops. We recognise that parents are the first educators in children's lives and value contributions to judgements about children's development. We use this information to support our assessments and share information about what your child needs to do next to develop and thrive. We also stay in touch via:

## **Monthly Newsletter**

The school newsletter is sent to all parents every month by email. It will also be published on the website. It provides parents with reports on events of the previous or forthcoming month and other information that is of interest. Why not look at this month's newsletter on the website!

## **The School Website**

Our school website is updated on a regular basis and is an ideal tool for parents to use to get up to date information about the school, including the Reception curriculum.

## **Parents' Evenings**

Over the academic year parents are invited into school for a 10-minute consultation with the class teacher once a term. We hold a formal parent evening in October/November to discuss how your child has settled into school and in March to discuss your child's progress. Towards the end of the year, we hold an optional parent evening in July so that we can discuss your child's achievements and next steps as they enter Year One.

Should you have any worries or concerns about your child's learning or well-being, please let your child's class teacher know as soon as possible. Staff are always happy to meet with you informally in order to discuss your child's needs.

## **Parent Forums**

At Templemoor Infant and Nursery School, we hold Parent Forum meetings where parents are invited to come and express their views on a range of issues within the school. For example, we have recently worked with a parent forum to develop the school's 'Relationship and Sex Education Policy' and 'Rights Respecting Behaviour Policy'. We welcome as many viewpoints from parents as possible and so hope that you will be able to attend some of these meetings in the future. Please look out for details in our monthly newsletter.

# Some Really Useful Things to Do

Make time for your children. Talk to them, play with them and enjoy learning together. Talk to us, as we are interested; we really do want to share your knowledge of your child.

Use the library, every book you enjoy together makes it more likely that your child will want to be a reader.

Make sure your child's book bag is in school every day. Complete home learning tasks that are set.

Find interesting places to visit.

Ask lots of questions, and answer your child's.

Get to know the School Governors, talk to them about the school and your hopes for your children. Governor profiles can be found on our website, [templemoorinfants.co.uk](http://templemoorinfants.co.uk).

Attend meetings for parents held at school; we want you to know about us.

If you have time, offer your help in school, we always have jobs to be done and appreciate help in or out of the classroom.

Join the 'Friends of Templemoor', to give your support. You may want to join their Facebook page too, just search on Facebook for 'Friends of Templemoor'.

Follow us on Twitter @TemplemoorINS.

Ensure that your child sees you following and respecting the school rules which are there for the benefit of all.

Research shows that where there is a positive working relationship between parents and teachers, children make best use of all the opportunities offered to them in school and are most likely to succeed.

Read the monthly school newsletter to stay informed of up coming school events.

Download the Seesaw app when your child starts Reception.

Share your child's 'Wow Moments!' with the Reception Team.

# Safeguarding

## **Safeguarding Children**

Templemoor takes the safety of its children very seriously and adheres to all safeguarding policies and procedures recommended by the Local Authority. We have a regularly reviewed and rigorous Safeguarding Policy. A copy of the Safeguarding Policy is available on request from the office, or from our school website. All staff, including our volunteers and supply staff, must ensure that they are aware of our rigorous safeguarding procedures. All adults who work in the school are subject to Disclosure Barring System (DBS) investigation procedures as well as rigorous employment and interview checking procedures.

Sometimes we may need to share information and work in partnership with other agencies when there are concerns about a child's welfare. We will always ensure that our concerns about our pupils are discussed with their parents/carers first unless we have reason to believe that this is not in the child's best interests.

The well-being of each child is the responsibility of the class teacher under the oversight of the Early Years Lead, Deputy Head Teacher and Head Teacher. If you have any concerns about safeguarding, please do not hesitate to contact a member of the safeguarding team.

Our Designated Safeguarding Lead is Mr Hodgson.

Our Deputy Designated Safeguarding Leads are Mrs Brown and Mrs Cundick.

The Governor responsible for safeguarding is Mrs Davenport.

## **Medication**

Any on-going ailments for which medicine may need to be administered e.g. asthma, allergic reactions, must be included on your admission form. Please make sure you regularly check the dates on these medicines and replace them when necessary. Staff cannot give medicines of any kind to the children without a medical prescription requiring medicine during the school day for a long term condition.

On the rare occasions where a first aider is required to administer medicine at school, you will be required to fill in a medical consent form and ensure the medicine is in date, labelled and has dosage instructions.

With the exception of inhalers and epipens, no medicine is kept in the classrooms.

## **Illness**

If your child is ill, please contact the office to let us know. If your child has suffered from vomiting or diarrhoea they must stay at home for at least 48 hours after the last bout suffered.

This is to protect all of the other children and staff. If your child becomes ill at school we will contact you. It is important that we have your up to date contact details. If any of your details change please inform the office immediately.

## **Punctuality**

It is essential that your child arrives on time every day. Lateness affects your child's education. Five minutes late every day adds up to 3 days missed from school over a year. 15 minutes late adds up to missing 2 weeks over a year. So being late can add up to a lot of lost learning time. Please help your child to be punctual.

It is also important that you are punctual in collecting your child at the end of the session. If you are going to be late you must call the school to inform the Office staff who will pass the message to the Reception Team.

## **Attendance**

We give attendance a high priority in our school. Low attendance is always investigated. If your child is ill you **MUST** contact the school office before 8:45a.m. to inform us of the reason for absence.

We **do not** authorise any extended leave or holidays during term time, even if your child is under the age of five. In the interests of children's safety it is our policy to follow up any unexplained absences.

## **First Aid**

Members of the school team have been trained in the delivery of First Aid and First Aid equipment is available in the Reception classrooms. Minor injuries can be treated in school but parents will be informed immediately in the event of a more serious injury. Parents must inform the office of any change to emergency contact telephone numbers.

## **Behaviour**

Our school has high standards and expectations of behaviour for all children. We have a whole school Rights Respecting Behaviour Policy and Class Behaviour Charter that we follow. A copy of this policy and Charter can be found on our school website. If we have any concerns about your child's behaviour, we will contact you in order for us to work together and support your child.

We do not tolerate bullying of any child.

We do not tolerate sexist, racist or homophobic comments in our school.

# Pupil Premium

## **What is the Pupil Premium?**

The pupil premium is a sum of money given to schools each year by the Government to improve the attainment of children who are currently entitled to free school meals or have been entitled to free school meals at any point within the previous 6 years.

## **How is it spent?**

The Government expects Templemoor Infant and Nursery School to choose how to spend their pupil premium money, as we are best placed to identify what would be of most benefit to the children who are eligible. Please see the Pupil Premium Report on our school website for a detailed breakdown of how we have spent this year's funding and how we intend to spend the Pupil Premium next year.

Often, all of the children in a class will reap some benefit from how the school spends its pupil premium: for example, if the money is used to fund an additional teaching assistant who works across the whole class, rather than providing one-to-one support.

## **How to claim your child's pupil premium**

Your child may be able to get free school meals if you get any of the following:

- Income support
- Income based job seekers allowance
- Support under part VI of the Immigration and Asylum Act 1999
- The guaranteed element of State Pension credit
- Child Tax Credit – provided you are not also entitled to Working Tax Credit and have an annual gross income of no more than £16,190

## **OR if they have been:**

- Looked after by the Local Authority for at least one day
- Have been adopted from care
- Have left care through special guardianship; and
- Subject to a child arrangement order – setting out with whom the child is to live (formerly a 'residence order')

To claim this money for your child, you are asked to complete a Pupil Premium Form which has been sent to you along with this booklet. Since September 2014, all children in Reception and Years 1 and 2 qualify for Universal Free School Meals, regardless of their family income, but only the children who would have qualified for free meals under the above income-based criteria will receive the pupil premium.

**Therefore, it is vital that parents still apply to register their free school meal entitlement to ensure that funding is available to provide children with the support they require.**





# The Friends of Templemoor

## A Message from the Friends of Templemoor

Welcome to Templemoor Infant and Nursery School and welcome to the Friends of Templemoor! As a parent, you are automatically a member of the school's Parent-Teacher Association and we hope you will enjoy the events which we organise throughout the year. We are made up of volunteers from all years of the school, including Reception and representatives of the teaching staff. Everyone is welcome at our meetings and input from all year groups is vital to our success so we really do hope that you will be able to get involved.

We aim to raise money for the school but also to have fun in the process. Our committee consists of a Chair, Vice Chair, Secretary and Treasurer. Friends of Templemoor works closely with Friends of Moorlands (our Junior School PTA) and we try to organise events together where possible.

## Events

The Friends of Templemoor calendar is quite busy, we organise (to name but a few) weekend movie afternoons, lolly sales in the summer term, family nights, penny drive and our biggest events of the year are our Christmas Fair and Summer Fair. We are always keen to hear ideas for new events so please do let us know if you think of anything. Why not come along to our Summer Fair, which is being held this year on **Saturday 25th June 2022** from 12pm to 2pm.

## How can you help?

We always need volunteers! Some examples of ways you can be involved are - help for 30 minutes on a stall at one of the fairs, bake a cake, secure raffle prizes from the local community, organise our uniform sales and/or we'd really be grateful if you'd consider a role on the committee. The possibilities are endless!

Please come along to a meeting, make some new friends and find out more.

Search for Friends of Templemoor on Facebook, or email [templemoorfot@gmail.com](mailto:templemoorfot@gmail.com)

# In and Around the School Grounds

## Parking in and around school

**Do not** bring cars or taxis into Nursery Close when bringing children to or collecting children from school. Parking is **not permitted** within the school grounds. We do allow parents who are Blue Disability Badge holders for either themselves or their child to park for a short period at the beginning and end of the day to collect their children. Please inform the office if you require this space.

We promote that as many children as possible walk to school as the fresh air and exercise on a daily basis gives huge health benefits, helps reduce carbon footprint and is free!

## School Gates and Doors

Please ensure you close gates as you go through them.

## Bikes and Scooters

Bike/scooter storage is provided and children are encouraged to ride/scoot to school. Please make sure that on arrival your child dismounts at the school gate, pushes their bike/scooter along the railed footpath, walk through the gate and park their scooter/bike.

**Please do not let children scoot or ride in the playground at any time, including younger siblings who do not attend the school.**

## Dogs

Dogs are **not** permitted in the school grounds at any time, including being tied up to the school railings. This is not because we assume that your pets are badly behaved: infant children are unpredictable and sometimes approach animals from behind or make sudden movements/noises which could result in a dog biting.

## Smoking

Smoking is prohibited in all areas of the school premises. This includes the use of Electronic cigarettes, E-cigarettes, Personal Vaporizers (PVs) or any other cigarette substitute which may become available.

# The School Office

School office hours are 8.30am until 4pm. Our School Business Manager, Mrs. Cook, and our School Secretary, Mrs. Merryman and Miss McCartney are happy to help. Please help them by:

- sending children to school with everything they need e.g. water bottle, book bag etc.
- bringing and collecting your child on time.

## Money/Other Slips

We are a cashless school.

## Absences

Please let the school office know of any absences before 8:45am.

## Deadlines

Some letters require a reply by a specific deadline. Please make sure that replies are sent before the deadline.

## Communication to Parents/Carers

We aim to become a paperless school, so we try to communicate with parents via emails and texts. Please make sure that we have up-to-date mobile phone numbers and email addresses.

We will send text messages, only for high priority messages. If you want dates/times or any other information please check your newsletters, and if you have misplaced them, please check our school website, [templemoorinfants.co.uk](http://templemoorinfants.co.uk).



**Mrs Cook**



**Mrs Merryman**



**Miss McCartney**

# Collecting Pupil Information

## **Pupil Data**

Pupil Data is essential for the school's operational use. Whilst most of the pupil information you provide to us is mandatory, some of it is requested on a voluntary basis. In order to comply with the data protection legislation, we will inform you at the point of collection, whether you are required to provide certain pupil information to us or if you have a choice in this. We collect pupil information via registration forms at the start of the school year. In addition, when a child joins us from another school, we receive a secure file containing relevant information called a Common Transfer File (CTF). It is vital that you inform us if any of the pupil information you give us on your registration form changes during the year, for example a new mobile phone number or change of address. We may also collect information such as consents for trips through online services, such as our school website portal.

## **Storing pupil data**

We hold pupil data securely for the set amount of time shown in our data retention schedule. For more information on our data retention schedule, and how we keep your data safe, please read our Data Protection Policy which is available to view on our school website.

## **Supply of Emergency Contacts from Parents**

In line with 'Keeping Children Safe in Education' parents are required to provide the school with at least 2 emergency contact numbers. These numbers will be confidentially stored as per the GDPR guidelines.



# Equality

At Templemoor Infant and Nursery School we welcome the equality duties placed on schools. We believe that all pupils and members of staff should have the opportunity to fulfil their potential whatever their background, identity and circumstance.

We are committed to creating a community that recognises and celebrates difference within a culture of respect and cooperation. We appreciate that a culture which promotes equality in relation to all protected characteristics (age, disability, gender reassignment, marriage or civil partnership, pregnancy and maternity, race, religion or belief, sex and sexual orientation) will create a positive environment and a shared sense of belonging for all who work, learn and use the services of our school. Our commitment to equality and diversity is a fundamental part of our drive towards continued excellence.

We recognise that equality will only be achieved by the whole school community working together and expect that you will support this fundamental part of our work.



# And Finally...

We hope that you and your child will enjoy your time with us here at Templemoor. We appreciate the trust you are showing by placing your child in our care. Together we will provide the best education we can to unlock your child's full potential.

You may like to become a school volunteer and work with small groups of children on a range of activities such as cooking, reading, IT activities, gardening and sewing. If you have any special skills you would like to share, please let us know. All parent volunteers need to complete a DBS check which can be arranged by appointment through the school office.

If you require any further information, please speak to any member of the Reception Team, or visit the school website at [templemoorinfants.co.uk](http://templemoorinfants.co.uk).





# Contact Information

Here is some information about our school which may be useful to you.

## Contact Details

Templemoor Infant and Nursery School  
Nursery Close  
Off Temple Road  
Sale Moor  
M33 2EG

Telephone: 0161 969 1622

Email: [admin@templemoor.trafford.sch.uk](mailto:admin@templemoor.trafford.sch.uk)

Website: [templemoorinfants.co.uk](http://templemoorinfants.co.uk)

## The X Club (Breakfast and After School Club)

Telephone: 07443 468842

Email: [xclub@templemoor.trafford.sch.uk](mailto:xclub@templemoor.trafford.sch.uk)

Other people you need to know are



**Mr Hodgson**  
**Head Teacher**



**Mrs Brown**  
**Deputy Head Teacher**



**Mrs Drinkwater**  
**SENDCO**



**Mrs Davenport - Chair of Governors**

# School Calendar

## 2022 to 2023

### Autumn Term 2022

<b>Opens</b>	Monday 5th September 2022
<b>Closes</b>	Friday 21st October 2022
<b>Opens</b>	Monday 31st October 2022
<b>Closes</b>	Friday 16th December 2022

### Spring Term 2023

<b>Opens</b>	Tuesday 3rd January 2023
<b>Closes</b>	Friday 10th February 2023
<b>Opens</b>	Tuesday 21st February 2023
<b>Closes</b>	Friday 31st March 2023

### Summer Term 2023

<b>Opens</b>	Monday 17th April 2023
<b>Bank Holiday Monday (Club is closed)</b>	Monday 1st May 2023
<b>Closes</b>	Friday 26th May 2023
<b>Opens</b>	Monday 12th June 2023
<b>Closes</b>	Wednesday 26th July 2023

### Staff Training Days (School will be closed to children)

Thursday 1st September 2022
Friday 2nd September 2022
Monday 20th February 2023
Thursday 27th July 2023
Friday 28th July 2023